

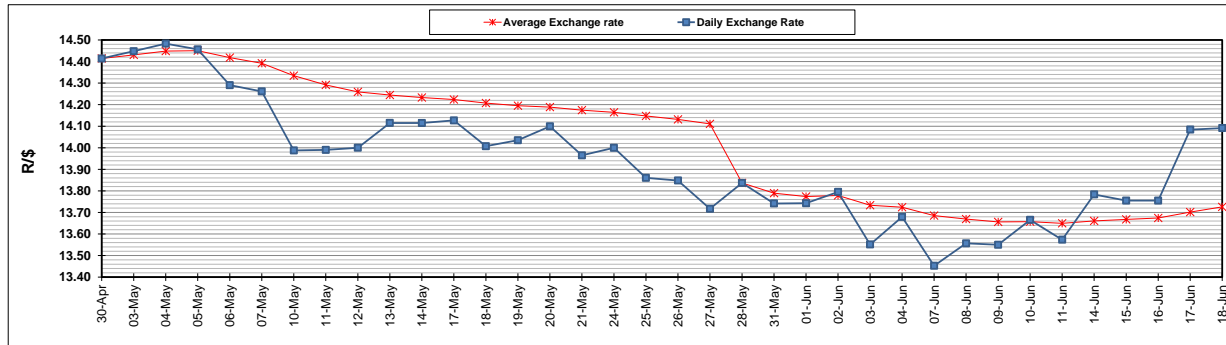
	PETROL 95 ULP	PETROL 93 ULP & LRP	DIESEL 0.05%	DIESEL 0.005%	ILL. PAR.
GAUTENG PUMP PRICE (SA c/l) AS FROM 02/06/2021	1,713.000	1,691.000	-	-	-
WHOLESALE PRICE (SA c/l) AS FROM 02/06/2021	-	-	1,466.620	1,471.020	877.488
SINGLE NATIONAL MAXIMUM RETAIL PRICE	-	-	-	-	1,102.000
BASIC FUEL PRICE - 18/06/2021 (SA c/l)	749.481	740.832	727.999	731.480	706.145
PRESS RELEASE CONTRIBUTION TO BFP 02/06/2021 - 18/06/2021 (SA c/l)	717.170	705.170	679.630	684.030	664.128
UNIT OVER/(UNDER) RECOVERY - 18/06/2021 (SA c/l)	(32.311)	(35.662)	(48.369)	(47.450)	(42.017)
AVERAGE BASIC FUEL PRICE 28/05/2021 - 18/06/2021	720.628	712.374	701.977	705.488	680.539
AVERAGE UNIT OVER/(UNDER) RECOVERY 28/05/2021 - 18/06/2021	(1.583)	(5.329)	(26.097)	(25.396)	(20.161)

ANALYSIS MOVEMENT OF AVERAGE OVER/(UNDER) RECOVERY

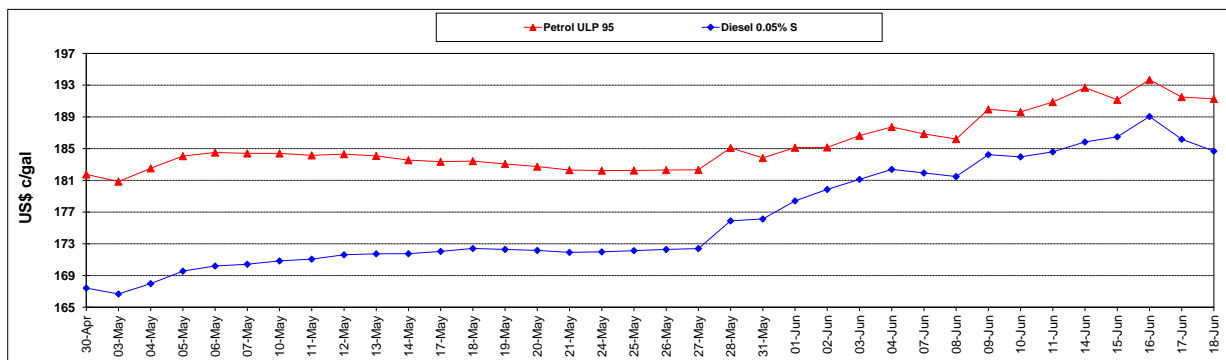
	PETROL 95	PETROL 93	DIESEL 0.05%	DIESEL 0.005%	ILL. PAR.
- MOVEMENT IN INTERNATIONAL PRODUCT PRICES	(21.801)	(25.316)	(45.792)	(45.188)	(39.255)
- MOVEMENT IN EXCHANGE RATE	20.218	19.987	19.695	19.793	19.094
AVERAGE UNIT OVER/(UNDER) RECOVERY 28/05/2021 - 18/06/2021	(1.583)	(5.329)	(26.097)	(25.396)	(20.161)

R/\$ EXCHANGE RATE - (R/\$14.0913- 18/06/2021)

EXCHANGE RATE USED IN BASIC FUEL PRICE



INTERNATIONAL PRODUCT PRICES OF BASKET USED IN BASIC FUEL PRICE



BASIC FUEL PRICE IN SA CENTS PER LITRE

